



Middleton School - PE & Sports Premium for primary schools

22/23 Academic Year



Total amount allocated for 2022/23	£16,900	Created July 22
Total amount of funding for 2022/23. To be spent and reported on by 31st July 2023.	£16,900	

Key indicator 1: The engagement of all pupils in regular physical activity – Chief Medical Officers guidelines recommend that primary school pupils undertake at least 30 minutes of physical activity a day in school

Intent	Implementation	Costings	Impact	Sustainability
To introduce pupils to new physical activities and experiences which they may pursue as a hobby	Explore new physical activities in a weekly 'Jolly Time' session. Invite visiting sports men and women into school to introduce their sport.	£500 £500	Pupils confident in trying new activities. Pupils pursue interests beyond school. Increased physical activity leading to confidence, increased access to sport, well being and rise in ability Wider range of opportunities for pupils to develop leisure interests.	Will continue while 'Jolly Time' is still an element of the curriculum Staffing required
To ensure that all pupils engage in regular swimming lessons.	Subsidise the cost of swimming to families to ensure that all pupils are included and attend throughout the year.	£1,000	Equality of access for all. Pupils engage in regular physical exercise. Pupils learn the skills required to swim unaided.	Transport availability to reach the venue. Engagement with swimming premises.
For pupils to be active in daily movement and dance activities	Training for staff. Purchase of resources Subscription to a dance education software package.	£300 £500 £200	Pupils improve cardiovascular status. Pupils work as part of a group and enhance relationships with others. Staff confident in the delivery of daily physical activity.	Renewal of subscription Staff training updates
For pupils to be supported to access a range of physical activities through play.	Employment of two further Play Assistants to support lunchtime play and structure physical games and activity. Purchase and use additional resources to encourage physical activity engagement at play.	£4,000 (to be part funded by PP) £800	Pupils participate in non- structured physical engagement while at play. Pupils develop a broader physical skill set. Pupils develop greater self confidence. Pupils' physical health improves with regular physical activity.	Repair and maintenance of resources. Staffing management

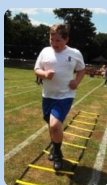
Key indicator 2: The profile of PESSPA being raised across the school as a tool for whole school improvement

Intent	Implementation	Costings	Impact	Sustainability
To raise the profile of PE and build positive relationships with all stakeholders	A minimum of three key school events planned throughout the Academic Year. Involvement in HWSP activities. Involvement in Special school sports	£800	Whole school community working collaboratively. PE showcased as an area of strength within the school Engagement with pupils from a wider range of schools.	Team to develop and maintain standards. Allow time for team to meet and organise
To raise standards across all curriculum areas through a kinaesthetic and physical approach to learning	To provide staff training and monitoring. To purchase appropriate resources	£200 £500	Individual pupils meet targets and raise attainment. Pupils engage and attend well to learning due to kinaesthetic approach.	Regular staff training updates.
To allow pupils to spectate and support peers partaking in sporting activities.	Purchase outdoor shelter and indoor seating areas. Subsidise minibus costs	£1,000 £200	Pupils support their peers and develop an interest in sporting activities	May require review and maintenance annually.

Key indicator 3: Increased confidence, knowledge and skills of all staff in teaching PE and sport

Intent	Implementation	Costings	Impact	Sustainability
To improve assessment materials and increase teacher confidence when assessing pupils within the area of PE	Create exemplars for planning and assessment documentation. Ensure progressive nature of skills on curriculum overviews.	£400	Pupils make good progress within PE. Staff have a common understanding of attainment	Documentation reviewed as necessary
To extend skill set and performance of lead PE teacher	Attend PE lead conference	£500	Staff skill set increased	Knowledge passed on to staff within school.
PE lead to dedicate time to organisation of sporting events both in and out of school	4 days of PE lead time to support development of sporting events in school.	£400	Pupils participate in competitive physical activities with children from Middleton and other schools	May need to be maintained from staffing budget
To improve teacher skill set and subject knowledge for the delivery of PE.	Purchase of external training for whole school CPD	£500	Increased confidence and subject knowledge among those delivering teaching and learning experiences.	Revised information at future CPD opportunities





Key indicator 4: Broader experience of a range of sports and activities offered to all pupils

Intent	Implementation	Costings	impact	Sustainability
To broaden sporting experiences within school	Employment of a tennis coach Employment of a cricket coach Employment of a basketball coach Creation of after school dance club with coach.	£400 £400 £400 £500	Pupils improve in PE performance. Pupils belong to a group. Pupils develop a sense of pride/achievement	Dependent upon budget Engagement with external coaches.
To raise awareness of Paralympics sporting activities	Book a wheelchair basketball fun day	£200	Pupils develop empathy and understanding with others and learn about equality access.	Dependent upon budget
To introduce pupils to rebound therapy	Source a local resource. Up skill staff	£500	Pupils enjoy a range of new sporting experiences.	Contact with site containing trampolines.

Key indicator 5: Increased participation in competitive sport

Intent	Implementation	Costings	Impact	sustainability
Increased participation in competitive sport in both the SEN and the mainstream arena	Purchase membership of H & W sports partnership. Make links with mainstream schools	£1,600	Staff access to CPD. Pupil access to festivals, competitions, leadership opportunities, integration with mainstream pupils. Raised awareness of mainstream staff and pupils of children with learning difficulties	Access to these events would still be on offer in collaboration with local schools should the sports partnership cease to exist
To socialise with a full range of pupils through a shared joy of sporting activity	Join other special schools in organised sporting events Join forum. Communicate re dates / events.	£300	Pupils mix with a wide range of peers and develop both physical and social skills. Pupils more confident in participating with a range of peers in new environments	Access will continue as long as the forum is pro-active. If ceases - will organise fixtures independently
To introduce a new weekly club which has a competitive sport focus	Introduce a football club.	£300	Pupils develop an understanding of team camaraderie and sense of belonging	Dependent upon staff availability

Swimming:

Since 2017, schools are required to publish how many pupils within their year 6 cohort are meeting the national curriculum requirement to swim competently, confidently and proficiently over a distance of at least 25 metres, use a range of strokes effectively and perform safe self-rescue in different water-based situations. At Middleton School all pupils swim every week. It is an important part of our curriculum both in terms of fitness and safety.

Within our current Year 6 cohort of 15 pupils, 4 are able to swim competently and proficiently over 25 metres. They can also tread water effectively and submerge themselves three times. They have not had experienced practising safe self-rescue.

20/21 Swimming disrupted due to Coronavirus restrictions.

21/22 Swimming lessons re- commenced